

Meet

DINO 180T

DINO® TRAILER MOUNTED MEWPs



Standard features in DINO 180 T:

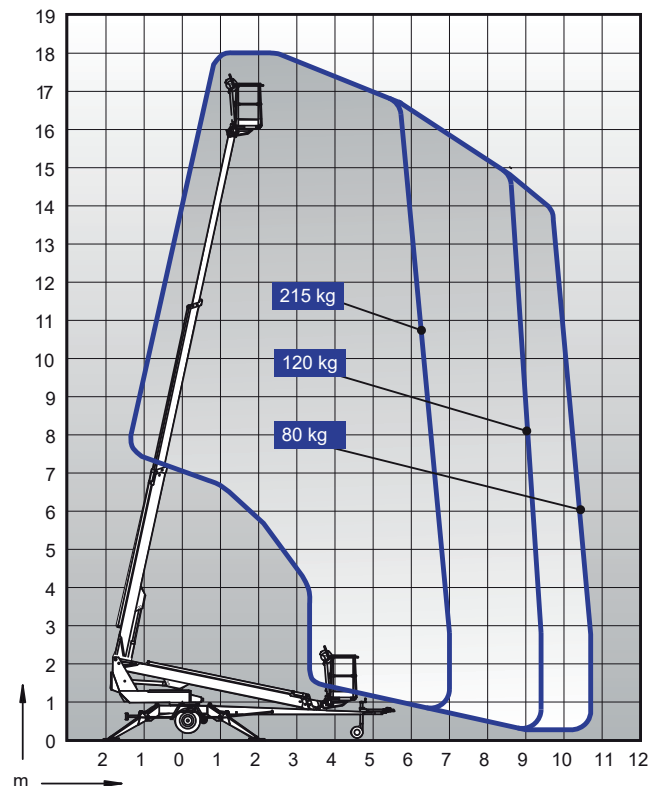
- Lightweight, robust, cost-effective
- Driving system; easy to move at work site
- Spacious, easy-entry basket; capacity 215 kg
- Large outrigger pads 280 x 360 mm
- Continuous rotation of the boom; easy and functional
- Basket rotation 90°
- Proportional controls
- Stable to tow, easy to transport
- Simple to use, clear and informative controls

Options available for DINO 180 T:

- Petrol power pack
- Cable steering for driving
- Outrigger support indicator
- LED working lights
- DINO SafeGuard secondary guarding
- Extra outrigger pads 500 x 500 x 35 mm + bracket
- Lockable tool / harness box
- Rack for tools and accessories
- Spare wheel

Technical data

	180T
Max. working height	1800 m
Max. platform height	1600 m
Max. outreach	1070 m
Support width	3.8 / 4.2 m
Lifting capacity	215 kg
Basket size	0.7 x 1.3 m
Boom rotation	cont.
Basket rotation	90°
Boom control	proport.
Transport length	7.46 m
Transport width	1.78 m
Transport height	2.19 m
Weight	1840 kg
Driving system	std
AC socket in the basket x 2	std
Electro motor	std
Petrol power pack	opt.
Gradeability	25 %



DINOLIFT
UP TO THE JOB